

Willow Tree Primary School

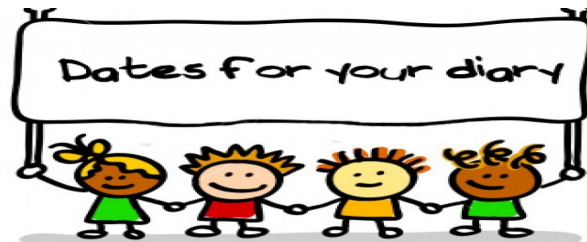
Newsletter 30th September 2022

Tel: 01423 883551

Email: admin@willowtree.n-yorks.sch.uk

Website: www.willowtree.n-yorks.sch.uk

Headteacher: Dr Helen Davey



Bewerely Park- Wed 5th to Fri 7th Oct

East Barnby- Mon 3rd to Fri 7th Oct

Try a hot dinner day- Thurs 6th Oct

Walk to school day- Fri 7th Oct

Flu Immunisations (Yr1-6)- Thurs 20th Oct

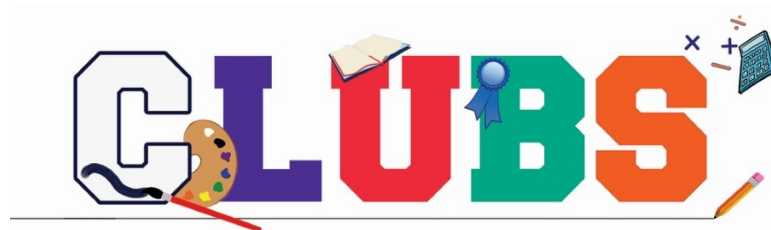
Break up- Thurs 20th Oct

INSET- Fri 21st Oct

Re-open- Mon 31st Oct

Break up- Fri 16th Dec

Re-open- Tues 3rd Jan



After school clubs are now LIVE on the website!

There are still places left on some clubs such as Yr 3/4 and Yr 5/6 Multisports and Yr 1/2 Football.

Please click on the link below to apply!

<https://www.willowtreeprimary.co.uk/parents-carers/clubs-activities/>

If you have any safeguarding concerns about a child that attends Willow Tree, please contact Helen Davey (Headteacher), James Hughes (Deputy Head) or Karen Daggett (Deputy Head)

Equipment being brought in from home...

Children shouldn't be bringing any of their own equipment and/or pencil cases into school. Before COVID Year 6 were able to bring a pencil case but this was stopped due to restrictions in place. We don't see any need to reinstate this, as everything your child needs is already available in the classrooms.

We also don't want any parents to feel pressured into buying a pencil case or equipment for children to 'keep up' with their friends in an already challenging economic climate.

Smart Watches and Fit Bits...

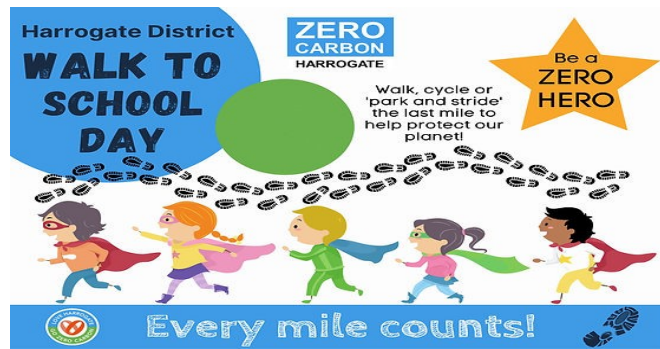
We just wanted to give some clarification about the use of smart watches and fit bits in school.

A smart watch is a device that connects to a mobile device which therefore can receive and send messages and make calls etc, these are NOT allowed in school as these could cause a distraction to children.

If a child's watch is also a basic fitbit, which doesn't connect to the outside world and isn't causing a distraction when in class, then these can be worn in school.



If you have any safeguarding concerns about a child that attends Willow Tree, please contact Helen Davey (Headteacher), James Hughes (Deputy Head) or Karen Daggett (Deputy Head)



Our first walk to school day of the new school year is **Friday 7th October!**

It would be lovely to have as many pupils and parents as we can to take part. We understand that it may be difficult for everyone to walk the whole way but could you...

Park a bit further than normal and walk the rest of the way?

Cycle or scoot to school?

Make the journey more fun by walking with other families and friends?

We hope to see as many of you as we can involved, we did extremely well last year by coming top of the leaderboard! Lets try keep it the same this year.



If you have any safeguarding concerns about a child that attends Willow Tree, please contact Helen Davey (Headteacher), James Hughes (Deputy Head) or Karen Daggett (Deputy Head)

Free School Meals

Are you eligible to apply for Income-Related Free School Meals?

Even if your child is in Reception, Year 1 or Year 2 (where meals are provided under the Infant School Meal programme), or if your child has a packed lunch, we ask that you still claim to ensure school receives the additional funding.

Did you know that School receives a significant amount of additional funding (Pupil Premium) per child registered as being in receipt of Free School Meals?

We use this funding to support the child's education. Pupil Premium, which is in addition to main school funding, is funding from the Government to improve the attainment of disadvantaged pupils.



Children eligible for Free School Meals also receive subsidies for after school clubs and residential.

How to Apply for Free School Meals?

It is now easier for parents to apply for free school meals. The new application process means that all applications are made electronically. In just a few simple steps and a matter of minutes you will receive an instant decision on whether your application has been successful. The new application process is now live and can be accessed immediately here:

[Synergy - Enquiry \(northyorks.gov.uk\)](http://northyorks.gov.uk/synergy-enquiry)

Harvest Collection...



We are overwhelmed by how much you have donated for the homeless project, considering the hard times we are all living through you have all really gone all out and we couldn't be prouder!

Thank you all so much for your donations.

If you have any safeguarding concerns about a child that attends Willow Tree, please contact Helen Davey (Headteacher), James Hughes (Deputy Head) or Karen Daggett

Does this look like the job for you?

Midday Supervisory Assistant

Willow Tree Primary School

Band B Point 2 Term Time Only

Variable Hours 7- 10 hours per week (starting at 10)

Permanent post required as soon as possible to support children at lunchtime

The governors, staff and children at Willow Tree Primary School, Harrogate wish to appoint an MSA to join our team as soon as possible.

We want our new member of staff to be:

- Someone who enjoys being with the children in the dining hall.
- Someone who enjoys organising games for the children to play in the playground.

Closing date: Wednesday 12th October

Please email: headteacher@willowtree.n-yorks.sch.uk for an information pack on applying for this role!

We can't wait to have a new member to our amazing Willow Tree Family!



If you have any safeguarding concerns about a child that attends Willow Tree, please contact Helen Davey (Headteacher), James Hughes (Deputy Head) or Karen Daggett (Deputy Head)

'Try a hot dinner' day!

On the 6th October, we are giving all children a chance of trying a hot dinner! The cost of this will be £2.69 which is payable on ParentPay under dinner money. If your child doesn't normally have hot dinners, you may have to remind them to let the teacher know on the day that they're having hot dinner.



If you have any safeguarding concerns about a child that attends Willow Tree, please contact Helen Davey (Headteacher), James Hughes (Deputy Head) or Karen Daggett (Deputy Head)

Champions Assembly

The following children were recognised as Class Champions in this week's Champions Assembly.

| | | | | | |
|----------|----------|----------|------------|--------------|---------|
| Ash | Arthur | Cedar | Mia | Silver Birch | Archie |
| Chestnut | Xana | Maple | Estelle | Walnut | Jason C |
| Holly | Myla | Rowan | Finley | Acer | Zaid |
| Cherry | Katie | Sycamore | Alexia | | |
| Hornbeam | Tilly | Elm | Louis | | |
| Lime | Scarlett | Hawthorn | Mia F | | |
| Spruce | Melvia | Larch | Kaydee-Rae | | |



Well done to all of you!

If you have any safeguarding concerns about a child that attends Willow Tree, please contact Helen Davey (Headteacher), James Hughes (Deputy Head) or Karen Daggett (Deputy Head)